

AC-4000i Machine Setup

"C" Number: _____
Serial No.: _____
Customer: _____
Date: _____

Language Selection	_____
Weighing Mode	_____
Weight Units	_____
Length Units	_____
Scale Interval	_____
Weightable Length (ON-scale time)	_____
Photoeye to Outfeed	_____
Auto Calculation	_____
Weightable Speed	_____
Weightable Speed Sensor (pulse)	_____
Infeed Speed	_____
Infeed Speed Sensor (pulse)	_____
Outfeed Speed	_____
Outfeed Speed Sensor (pulse)	_____
Weight Zones	_____
Analog Gain	_____
Assign Inputs	_____
External Reject	_____
Reject Verify	_____
Bin Full	_____
Set tara	_____
Installed Options	_____
Number of Products	_____
Statistics Option	_____
Reject Verify	_____
Comm Port 2 Option	_____
Filler Option	_____
OIML – W&M Mode	_____
Product Tracking	_____
Checkweigher ID	_____
Port 1 Function	_____
Baud Rate 1	_____
Parity 1	_____
Word Length 1	_____
Stop Bits 1	_____
H/W Handshake 1	_____
Port 2 Function	_____
Multidrop Protocol	_____
Modbus Type	_____
Access Level	_____
Baud Rate 2	_____
Parity 2	_____
Word Length 2	_____
Stop Bits 2	_____
H/W Handshake 2	_____

AC-4000i Alarm Assignment Setup

"C" Number: _____

Serial No.: _____

Customer: _____

Date: _____

Alarm A/D Underflow	Alarm, Shutdown, Both, Disable
Alarm A/D Overflow	Alarm, Shutdown, Both, Disable
Alarm Outfd Q full	Alarm, Shutdown, Both, Disable
Alarm Wtbl Q full	Alarm, Shutdown, Both, Disable
Alarm Dplt Q full	Alarm, Shutdown, Both, Disable
Alarm Print Buf Full	Alarm, Shutdown, Both, Disable
Alarm Weigh not done	Alarm, Shutdown, Both, Disable
Alarm Print off-line	Alarm, Shutdown, Both, Disable
Alarm Verify Q full	Alarm, Shutdown, Both, Disable
Alarm Verify missing	Alarm, Shutdown, Both, Disable
Alarm Verify Div 1	Alarm, Shutdown, Both, Disable
Alarm Verify Div 2	Alarm, Shutdown, Both, Disable
Alarm Verify Div 3	Alarm, Shutdown, Both, Disable
Alarm Comm Error	Alarm, Shutdown, Both, Disable
Alarm Calib Active	Alarm, Shutdown, Both, Disable
Alarm No-Gap	Alarm, Shutdown, Both, Disable
Alarm Rezero limit	Alarm, Shutdown, Both, Disable
Alarm Photoeye fail	Alarm, Shutdown, Both, Disable
Alarm Avg Below Ref	Alarm, Shutdown, Both, Disable
Alarm Consec Rej	Alarm, Shutdown, Both, Disable
Alarm Fill Hi Limit	Alarm, Shutdown, Both, Disable
Alarm Fill Lo Limit	Alarm, Shutdown, Both, Disable
Alarm Fill Setup	Alarm, Shutdown, Both, Disable
Alarm Fill Modulation	Alarm, Shutdown, Both, Disable
Alarm Bin Full	Alarm, Shutdown, Both, Disable
Alarm Motor Control	Alarm, Shutdown, Both, Disable
Alarm Motor Ctrl Com	Alarm, Shutdown, Both, Disable
Alarm Track hi limit	Alarm, Shutdown, Both, Disable
Alarm Track lo limit	Alarm, Shutdown, Both, Disable
Auto Zero Threshold	_____
OIML Jumper	_____
Version:	_____

AC-4000i 3 Zone (Stats I, Stats II) Product Setup

"C" Number: _____
 Serial No.: _____
 Customer: _____
 Date: _____

MENU ITEM	PRODUCT INFORMATION				
Product Number					
Reference Weight					
Under Cutpoint					
Over Cutpoint					
Tare Weight					
Consecutive Rejects					
Package Length					
Interrogate delay (Transition time)					
Maximum Weightable Speed*					
Set Weightable Speed*					
Set Infeed Speed*					
Set Outfeed Speed*					
Filter Type					
Frequency					
Number of weight samples					
Under Weights Diverter 1					
On Weights Diverter 2					
Over Weights Diverter 3					
No-Gap Diverter					
Ext Rej Diverter					
Diverter 1 Delay					
Diverter 1 Duration					
Diverter 2 Delay					
Diverter 2 Duration					
Diverter 3 Delay					
Diverter 3 Duration					
Verification Delay					
Filler Setup**					
Filler Mode**					
Tracker Setup***					
Tracker On-Off***					

*Set speeds used when Motor Control is chosen on Port 1 function. Maximum Weightable speed not shown.

**These menu items appear if Filler Feedback Option is installed. Refer to Filler Feedback Setup Record

***These menu items appear if Product Tracker Option is installed. Refer to Filler Product Tracker Setup Record.

AC-4000i 5 Zone (Stats II, EEC) Product Setup

"C" Number: _____
 Serial No.: _____
 Customer: _____
 Date: _____

MENU ITEM	PRODUCT INFORMATION				
Product Number					
Reference Weight					
TU2 Cutpoint					
TU1 Cutpoint					
TO1 Cutpoint					
TO2 Cutpoint					
Tare Weight					
Consecutive Rejects					
Package Length					
Interrogate Delay (Transition time)					
Maximum Weightable Speed*					
Set Weightable Speed*					
Set Infeed Speed*					
Set Outfeed Speed*					
Filter Type					
Frequency					
Weight Sample					
Under TU2: Diverter					
Within TU2-TU1: Diverter					
Within TU1-TO1: Diverter					
Within TO1-TO2: Diverter					
Over TO2: Diverter					
No Gap Diverter					
Ext Rej Diverter					
Diverter 1 Delay					
Diverter 1 Duration					
Diverter 2 Delay					
Diverter 2 Duration					
Diverter 3 Delay					
Diverter 3 Duration					
Verification Delay					
Filler Setup**					
Filler Mode**					
Tracker Setup***					
Tracker On-Off***					

*Set speeds used when Motor Control is chosen on Port 1 function. Maximum Weightable speed not shown.

**These menu items appear if Filler Feedback Option is installed. Refer to Filler Feedback Setup Record

***These menu items appear if Product Tracker Option is installed. Refer to Filler Product Tracker Setup Record.

AC-4000i Filler Feedback (Servo) Setup Record

"C" Number: _____
Serial No.: _____
Customer: _____
Date: _____

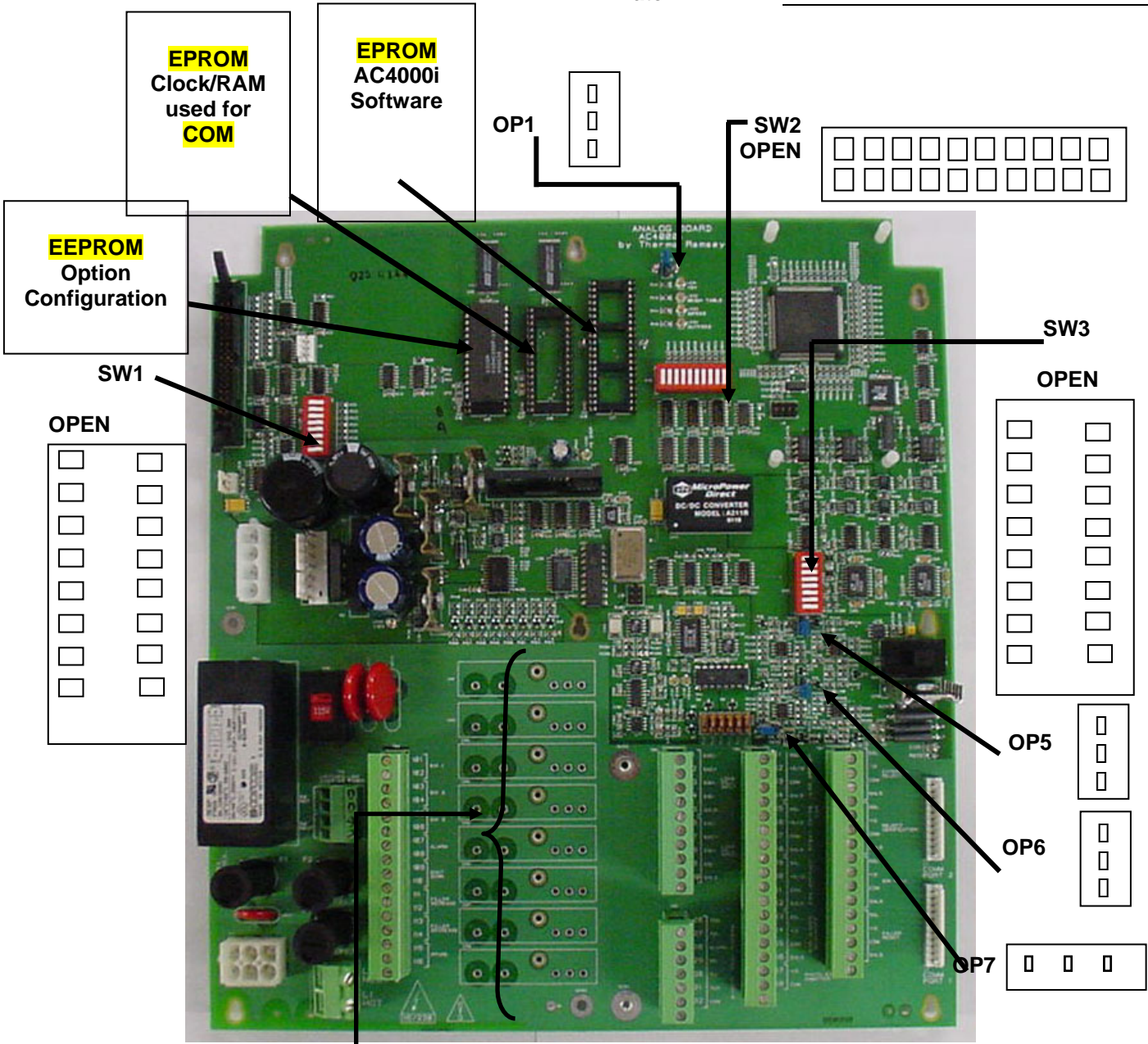
Filler Target Weight _____
Filler Low Weight Limit _____
Filler High Weight Limit _____
Filler Package Delay _____
Filler Start Up Delay _____
Filler Package to Average _____
Filler Sensitivity _____
Filler Max. Corr. _____
Filler Deadband _____
Filler Modulation _____
Filler Z-Factor _____
Filler Max Mod. _____

AC4000i Product Tracker Setup Record

ON-OFF _____
Number of Samples _____
Zones _____
Reference weight _____
Upper Limit _____
Lower Limit _____

AC-4000i Internal Switch and Jumper Settings

"C" Number: _____
 Serial No.: _____
 Customer: _____
 Date: _____



	AC	DC
CR1		
CR2		
CR3		
CR4		
CR5		
CR6		
CR7		
CR8		

Prepared By: _____

Date: _____

